

E-ACT Blackley Academy



June 2024

School Holidays 2024

School open: Monday 3 June 2024

Summer holiday

School closes: Wednesday 24 July 2024

June dates for the diary...

- 3rd – 14th June Y4 Multiplication Times Table check
- 10th – 14th June Y1 Phonics Screening
- 10th June – Y1 Trip
- 13th June – Cricket Day for Y1, Y2 & Y3
- 14th June – EYFS Trip
- 14th June – KS2 Premier Education Enrichment Day
- 20th June – Y6 Trip
- 21st June – Y2 Trip
- 24th – 28th June – Sports day
- 28th June – Whole School Mission to Mars Day



We can confirm the dates as follows;

Nursery – Monday 24th June @ 9.30am

Reception – Monday 24th June @ 10.30am

Years 1 & 2 – Wednesday 26th June @ 9.30am

Years 3 & 4 – Tuesday 25th June @ 9.30am

Years 5 & 6 – Thursday 27th June @ 9.30am

Trips

All classes will be partaking in a school trip, if your child's trip is not listed above, then their trip will be in July.

New Afterschool clubs

Monday – Boxing Year 1, 2 & 3

Tuesday – Boxing Year 4, 5 & 6

Wednesday – Gymnastics Year 4, 5 & 6

Thursday – Drama Year 1, 2 & 3

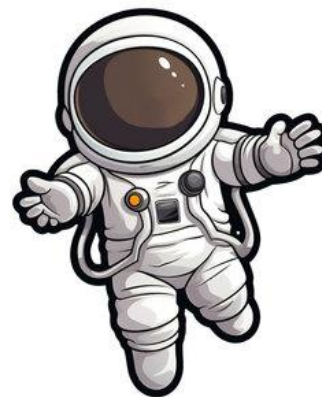
Please sign up via Parentpay.

28th June 2024

Mission to Mars Day

The whole school will be involved in a very exciting mission!!

Keep your  peeled more information to follow.



Catch up news

MASSIVE THANK YOU to all our parents/carers/children and staff for our fantastic fundraising efforts last month.

We raised as a school;

£668.00 in support for Cash for kids

And

£117.00 from our EYFS Tea party in support of Springhill Hospice

WELL DONE AND THANK YOU!

Useful Information

- Drop off and pick up times

School gates open at 8.35am and close at 8.50am each morning. Gates re-open at 3.15pm for end of day collections. Please ensure children are dropped off and collected on time.

- Breakfast club

Breakfast club is available from 7.45am Monday-Friday at a cost of £1 per day. You do not need to sign up in advance. Simply arrive at the hall before 8.30am. The attendance fee will be then forwarded to your child's Parentpay account. You are able to make payment transactions daily or weekly. If you would prefer monthly, this should be relayed with the school office.

- Medicine

Medication can be dropped off at the school office at the start of the day. We can accept and administer medication under the following conditions;

- Medicine has to be taken 4 times a day;
- Medicine has been prescribed by a doctor, and is in its original packaging complete with pharmacy labels;
- You have completed a medication form (available from the school office).

- School Meals

Schools meals are charged at £2.26 per day, unless the child is entitled to free school meals. Payment for meals to be made via Parentpay. Failure to make regular payments will result in you being asked to provide your child with a packed lunch. Any changes to school meals must be made in writing/email to the school office. If you think you may be entitled to free school meals please make an online application via www.cloudforedu.org.uk/ofsm/sims.

Points of Contact

Example Context	Who to contact	Recommended method of contact
General Information: Homework, uniform list, curriculum, school events, holiday dates etc...	Website	Website
General issues relating to class, Learning, uniform, welfare etc...	Class Teacher	Class Dojo
More serious Issues relating to bullying, learning, welfare etc...	Class Teacher Phase Leader	Meeting Appointment via class dojo
Concerns that have not been able to be resolved via class teacher or phase leader. Concerns about the school more generally. Concerns about a member of staff.	James Hughes (Head Teacher)	Appointment via email James.hughes@eba.e-act.org.uk 0161 740 2185
SEND: If you have questions regarding special educational needs.	Class teacher Gemma Spence (SENCO)	Appointment via Class Dojo or Gemma.spence@eba.e-act.org.uk
Attendance: If you need to report your child absent.	Matthew Nuttall	Contact via phone 0161 740 2185
Complaints	Please follow our complaints policy	https://blackleyacademy.e-act.org.uk/wp-content/uploads/sites/6/2022/11/E-ACT-Complaints-Policy-and-Procedure-2022.pdf
Family Support: Early Help, financial support, free school meals, mental health etc...	Tunde King Rhonda Alleyne	Tunde.king@eba.e-act.org.uk Rhonda.alleyne@eba.e-act.org.uk
Safeguarding: If you are concerned about the safety of a child.	Gemma Spence	Gemma.spence@eba.e-act.org.uk
SEND: If you have a query regarding special educational needs.	Gemma Spence	Gemma.spence@eba.e-act.org.uk
General Support – Dropping off medicine, ParentPay, Changes of details, Changes of meals.	School Office	Blackley.Office@E-ACT.org.uk Blackley.Parents@E-ACT.org.uk